



Redbud Healthcare District Introduction to (Re)Districting

10/24/2023

Dr. Justin Levitt, Vice-President
National Demographics Corporation

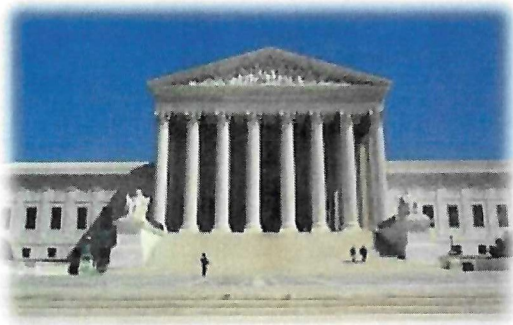
Redistricting Process

Step	Description
Initial Hearing October 24, 2023	Held prior to release of draft maps. Education on process and review of current Zones.
Release Draft Maps November 7, 2023	Release of draft map options online
Two Draft Map Hearings Nov. 14 & Dec. 12	Two Public Hearings to discuss and revise the draft maps and to discuss the election sequence.
Map Adoption December 12, 2023	Final map must be posted at least 7 days prior to adoption. Map adopted via resolution

Redistricting Rules and Goals

Federal Laws

- ❑ Equal Population
- ❑ Federal Voting Rights Act
- ❑ No Racial Gerrymandering



Traditional Redistricting Principles

- ❑ Communities of interest
- ❑ Compact
- ❑ Contiguous
- ❑ Visible (Natural & man-made) boundaries
- ❑ Respect voters' choices / continuity in office
- ❑ Planned future growth
- ❑ Minimize voters shifted to different election years
- ❑ Preserving the core of existing election areas

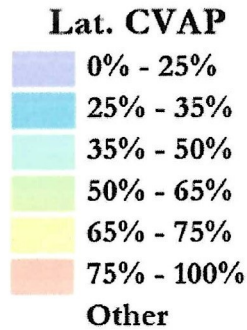
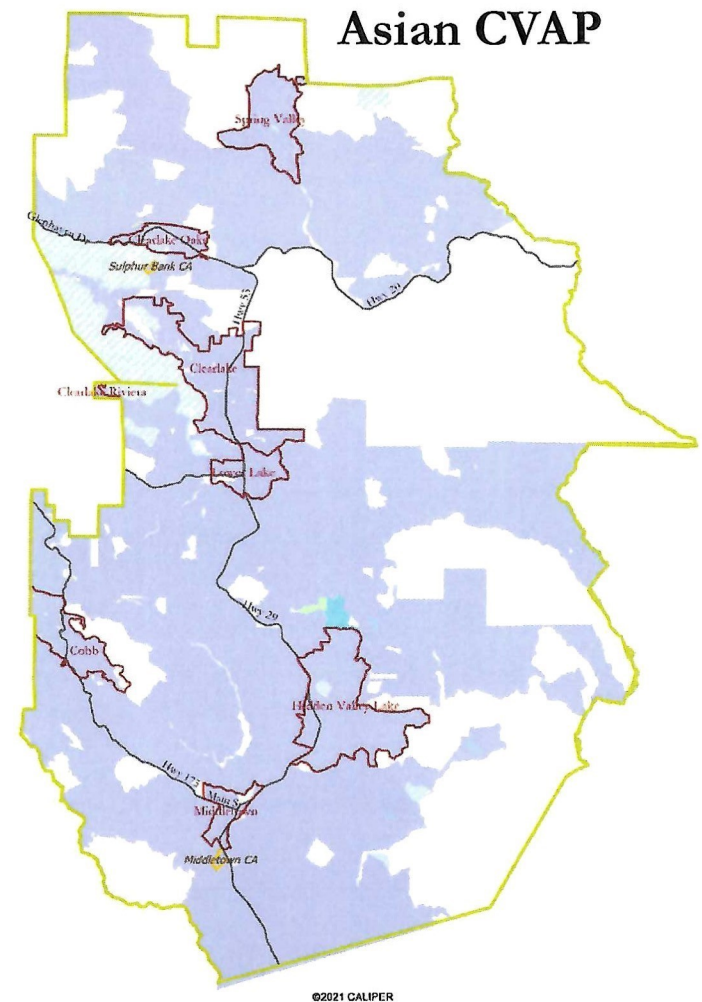
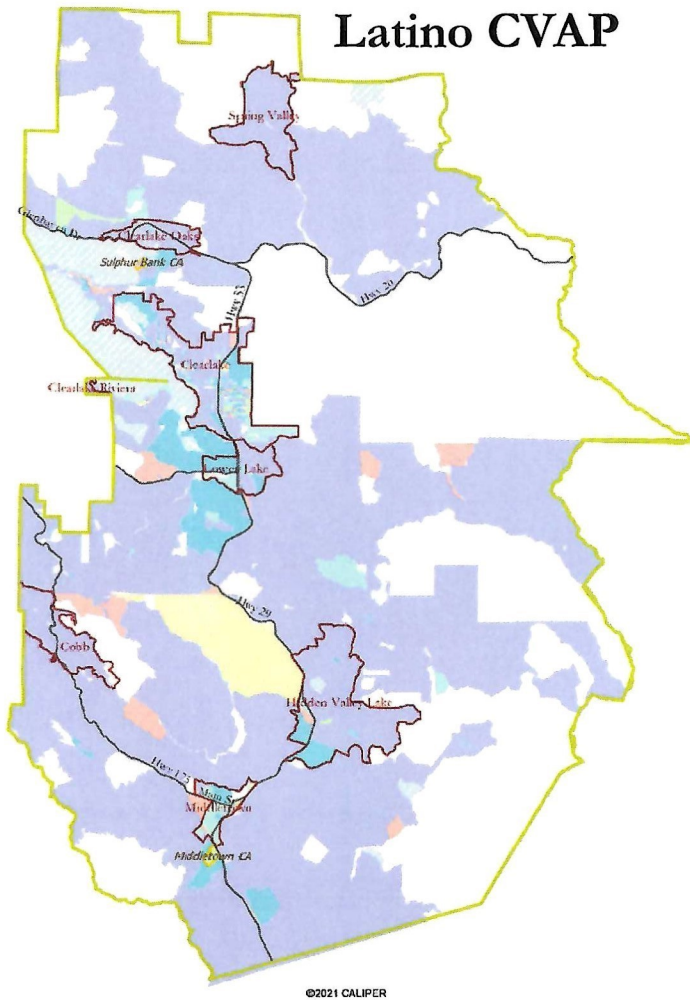
Demographic Summary of Existing Districts

		1	2	3	4	5	Total
	Total Pop	4,493	4,677	5,869	9,554	10,728	35,321
	Deviation from ideal	-2,571	-2,387	-1,195	2,490	3,664	6,235
	% Deviation	-36.40%	-33.79%	-16.92%	35.25%	51.87%	88.26%
Total Pop	% Hisp	14%	26%	34%	29%	17%	24%
	% NH White	69%	60%	54%	59%	72%	64%
	% NH Black	4%	5%	4%	4%	1%	3%
	% Asian-American	3%	2%	2%	1%	2%	2%
Citizen Voting Age Pop	Total	3,047	2,845	4,525	6,192	8,441	25,049
	% Hisp	8%	11%	22%	18%	10%	14%
	% NH White	86%	80%	65%	74%	87%	79%
	% NH Black	2%	5%	3%	3%	1%	3%
	% Asian/Pac.Isl.	2%	1%	2%	1%	1%	1%

Estimates using official 2020 demographic data and 2023 5-year American Community Survey data.

Each of the 5 Zones must contain about 7,064 people.

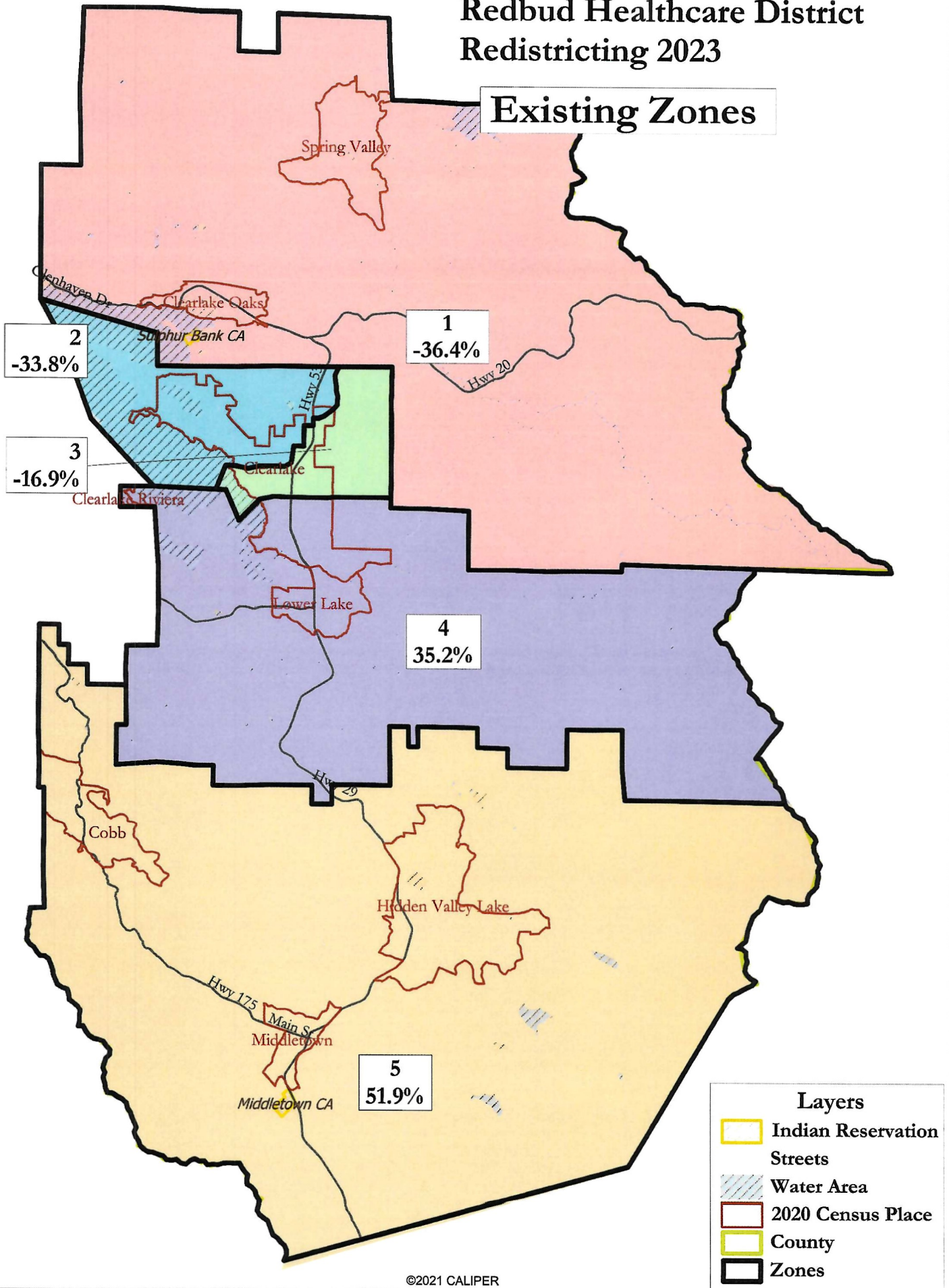
Latino & Asian CVAP



Latinos are somewhat concentrated in Clearlake east of Highway 53; no concentrations of Asian-Americans or African-Americans.

Redbud Healthcare District Redistricting 2023

Existing Zones



Existing Zones							
District		1	2	3	4	5	Total
	Total Pop	4,493	4,677	5,869	9,554	10,728	35,321
	Deviation from ideal	-2,571	-2,387	-1,195	2,490	3,664	6,235
	% Deviation	-36.40%	-33.79%	-16.92%	35.25%	51.87%	88.26%
Total Pop	% Hisp	14%	26%	34%	29%	17%	24%
	% NH White	69%	60%	54%	59%	72%	64%
	% NH Black	4%	5%	4%	4%	1%	3%
	% Asian-American	3%	2%	2%	1%	2%	2%
Citizen Voting Age Pop	Total	3,047	2,845	4,525	6,192	8,441	25,049
	% Hisp	8%	11%	22%	18%	10%	14%
	% NH White	86%	80%	65%	74%	87%	79%
	% NH Black	2%	5%	3%	3%	1%	3%
	% Asian/Pac.Isl.	2%	1%	2%	1%	1%	1%
Voter Registration (Nov 2020)	Total	2,444	2,195	2,321	4,505	6,604	18,069
	% Latino est.	9%	12%	17%	16%	11%	13%
	% Spanish-Surnamed	8%	11%	15%	15%	10%	11%
	% Asian-Surnamed	2%	1%	1%	1%	1%	1%
	% Filipino-Surnamed	1%	1%	1%	1%	1%	1%
	% NH White est.	85%	80%	77%	77%	84%	81%
	% NH Black	2%	3%	3%	4%	1%	2%
Voter Turnout (Nov 2020)	Total	1,398	972	871	2,091	3,917	9,250
	% Latino est.	15%	28%	44%	35%	18%	25%
	% Spanish-Surnamed	6%	7%	9%	9%	6%	7%
	% Asian-Surnamed	1%	1%	1%	1%	1%	1%
	% Filipino-Surnamed	1%	1%	1%	1%	1%	1%
	% NH White est.	87%	84%	83%	84%	88%	86%
	% NH Black	2%	3%	4%	3%	1%	2%
Voter Turnout (Nov 2018)	Total	1,848	1,506	1,498	3,261	5,473	13,586
	% Latino est.	6%	9%	12%	12%	8%	9%
	% Spanish-Surnamed	6%	9%	12%	12%	7%	9%
	% Asian-Surnamed	1%	1%	1%	1%	1%	1%
	% Filipino-Surnamed	1%	1%	1%	1%	1%	1%
	% NH White est.	88%	79%	79%	83%	88%	85%
	% NH Black est.	0%	5%	4%	1%	0%	1%
ACS Pop. Est.	Total	3,724	3,900	6,386	9,302	11,128	34,440
Age	age0-19	15%	25%	27%	28%	23%	24%
	age20-60	44%	43%	52%	43%	45%	45%
	age60plus	41%	33%	21%	30%	32%	31%
Immigration	immigrants	12%	6%	10%	9%	8%	9%
	naturalized	62%	41%	35%	36%	57%	46%
Language spoken at home	english	85%	90%	81%	70%	87%	81%
	spanish	4%	9%	18%	28%	12%	16%
	asian-lang	0%	0%	0%	0%	0%	0%
	other lang	11%	0%	0%	1%	1%	2%
Language Fluency	Speaks Eng. "Less than Very Well"	6%	4%	7%	8%	4%	6%
Education (among those age 25+)	hs-grad	71%	77%	71%	70%	67%	70%
	bachelor	12%	6%	6%	8%	17%	11%
	graduatedegree	8%	3%	2%	3%	6%	5%
Child in Household	child-under18	15%	22%	31%	25%	28%	25%
Pct of Pop. Age 16+	employed	45%	45%	50%	51%	56%	51%
Household Income	income 0-25k	27%	35%	29%	27%	17%	25%
	income 25-50k	28%	28%	31%	29%	20%	26%
	income 50-75k	8%	14%	19%	18%	13%	15%
	income 75-200k	35%	21%	21%	20%	41%	29%
	income 200k-plus	3%	2%	1%	6%	8%	5%
Housing Stats	single family	94%	95%	83%	95%	99%	94%
	multi-family	6%	5%	17%	5%	1%	6%
	rented	32%	38%	49%	33%	25%	33%
	owned	68%	62%	51%	67%	75%	67%

Total population data from the California adjustment to the 2020 Decennial Census.

Surname-based Voter Registration and Turnout data from the California Statewide Database.

Latino voter registration and turnout data are Spanish-surname counts adjusted using Census Population Department undercount estimates. NH White and NH Black registration and turnout counts estimated by NDC. Citizen Voting Age Pop., Age, Immigration, and other demographics from the 2017-2021 American Community Survey and Special Tabulation 5-year data.